

GA FLAT PLAN - UNIT_2-10

Scale : 1 : 25

MWL TO SET OUT M&E SOCKETS/SWITCHES FOR ALL STORE/UTILITY CUPBOARDS IN APARTMENTS. PLEASE REFER TO UTILITY CUPBOARD DETAIL COMBINED SERVICES DRAWING BY MWL.

RCP ELECTRICAL STRATEGY SYMBOL LEGEND

- Bell Push Unit
- Door bell sounder
- Entrance phone
- Thermostatic heating control
- 1 Gang light rocker switch
- 1 Gang 2 way rocker switch
- 1 Gang 3 way rocker switch
- 2 Gang rocker switch (Bathrooms contain a 2-gang switch one for the lights and one rocker switch for MVR boost @1150mm AFFL. See drawing 03662)
- 3 Gang rocker switch
- 4 Gang rocker switch
- Energy efficient batten fitting
- Recessed LED low voltage power downlighter
- Wall mounted fitting
- External sounder
- TV socket
- Pendant light fitting
- Shaver socket
- Double 13a switched socket outlet
- Double 13a switched socket outlet with USB outlets - refer to CP specification for further information
- 45A Hob connection unit
- Unswitched fused connection unit for cooker hood
- Unswitched fused connection unit for undercupboard lighting
- 13A unswitched socket outlet for dishwasher
- 13A unswitched socket outlet for integrated fridge freezer
- 20A flex outlet plate for integrated oven
- Multi gang engraved switched fuse connection unit (above kitchen worktop)
- BT socket
- Fused spur for the future shower pump
- Media plate (2xSAT-1xTV-1xBT-1xData-2xDouble Sockets)
- Towel radiator
- Radiator
- Ceiling mounted vent grille linked to fan unit
- Air Brick - Exhaust
- Air Brick - Intake
- High-level duct routes
- Smoke detector with sounder
- Heat detector with sounder
- Sprinkler head
- LED lights under the wall units (Except under hood cabinet)
- Partinging requires on either one or both sides of the partition wall. Please refer to 03660 series for partinging details.

- NOTES**
- KITCHEN SOCKET SETTING TBC - AWAITING KITCHEN SUBCONTRACTOR DRAWINGS.
 - 63MM THICK SACRIFICIAL LINING TO KITCHENS - REFER TO DRY LINING DETAIL.
 - FOR ALL DUCTWORK AT HIGH-LEVEL, REFER TO MWL DRAWINGS AND SPECIFICATIONS.
 - ALL RADIATORS' SIZES UPDATED PER MWL COMMENTS AND THEIR LOCATIONS (WHERE ACHIEVABLE) IMPLEMENTED PER COUNTRYSIDE REQUEST.
 - ALL MVR DUCTWORK ROUTES ARE INDICATIVE ONLY - BASED ON MWL LAYOUTS. FINAL ROUTES TO M&E SPECIALIST SUBCONTRACTOR DESIGN & INSTALLATION

Notes:

- Do not scale from this drawing; work to figured dimensions only.
- All information is to be checked on site for accuracy and fit.
- Report any discrepancies and omissions to RMA Architects.

CDM ERIC Notes

Where RMA services on a project do not include for site inspections and works surveys, RMA do not warrant that 'as built' issue drawings are a complete and accurate record of what has been constructed

Unless notified specifically by the responsible party, changes made on site to RMA design information has not been incorporated in this drawing.

SCALE BAR: 1:25 @ A1, 1:50 @ A3

GENERAL NOTES

- All work to be to current British Standards, NHBC Technical Standards, Building Regulations. All products to have a use specific BBA Agreement certificate.
- Refer to other RMA drawings:
- 0000 BIM Models /2D - Strategy /Planning diagrams
 - 1000 GA Plans / GA Flat Layout
 - 1400 Fire strategy Plans
 - 2000 GA Elevations & Sections
 - 2400 Fire strategy Elevations
 - 3000 Detail Drawings
 - 4000 Lift and Stair core
 - 5000 Schedules
 - 6000 Bathrooms

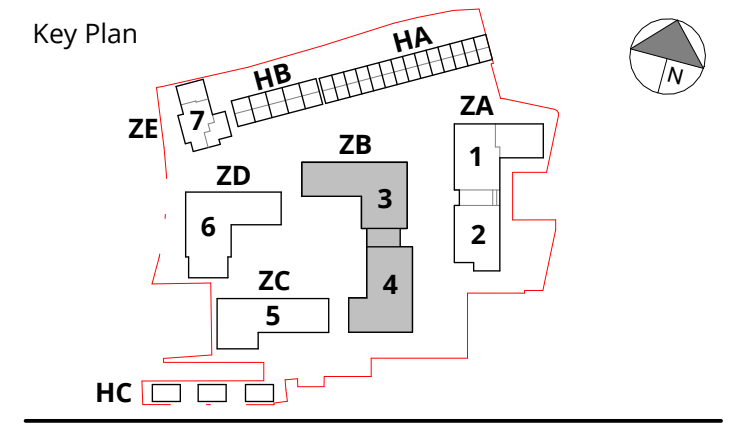
Read in conjunction with other consultants information:

- Brand Consulting** - for structural and civil information
- MWL Group** - for MEP services & utilities information
- LDA** - for external finishes and landscape information

| | | | | |
|----|----------|--|------|------|
| A1 | 20.08.25 | AS BUILT | RR | JLee |
| C3 | 23.10.24 | Plot Numbers Amended | JLee | MMc |
| C2 | 17.10.24 | Storage Cupb Socket Omitted & Radiator Size Amended | JLee | MMc |
| C1 | 30.08.24 | USB Socket Note & Symbol Amended. Door structural openings updated | JLee | MMc |

RMA

320C Highgate Studios
53-79 Highgate Road, London, NWS 1TL
London NWS 1TL
020 7284 1414, rmaarchitects.co.uk © RMA



Project

Marlowe Road Phase 2b&3

RMA Project Reference 2226
Client

COUNTRYSIDE
Places People Love

| | | | |
|-------------------|--------|----|---------|
| Scale | Date | By | Checked |
| As indicated @ A1 | DEC 22 | JR | JLee |

Drawing Title

ZONE ZB - BLOCK 4

DETAILED FLAT PLAN
UNIT 2_10 - PRIVATE 2B4P

| | |
|----------------------------------|-------------|
| Purpose of Issue | Status Code |
| AS BUILT | A5 |
| Drawing No | Revision |
| B00057- RMA- ZB- ZZ- DR-A- 01729 | A1 |

2-10 - PLOT NUMBERS

| Flat Type | Plot Number | Level | Block/Building |
|-----------|-------------|-----------|----------------|
| 2-10 | 142 | FFL_01_B4 | B4 |
| 2-10 | 149 | FFL_02_B4 | B4 |
| 2-10 | 156 | FFL_03_B4 | B4 |
| 2-10 | 163 | FFL_04_B4 | B4 |
| 2-10 | 169 | FFL_05_B4 | B4 |
| 2-10 | 175 | FFL_06_B4 | B4 |

2-10 - UNIT TYPE

| Flat Type | NIA | Tenure | Occupancy | Area (sq-ft) |
|-----------|-------------------|--------------|-----------|-----------------------|
| 2-10 | 72 m ² | Private Sale | 2B4P | 778.6 ft ² |

GA KEY

Dimensions

- Dimension to finishes
- Boxing Setting Out
- Dimension to internal walls (finish face to finish face)
- Dimension to electrical fixtures/fitings
- Dimension to fire detection equipment

Floor Tag

- (L1) LVT Flooring
Transition strip: LVT/Tiled Flooring (positioned under door leaf)
- (C1) Carpet Flooring
Transition strip: LVT/Carpet Flooring (positioned under door leaf)
- (T1) Tile Floor
Transition strip: Tiled/Carpet Flooring (positioned under door leaf)
- (P1) Pavers to Amenity

